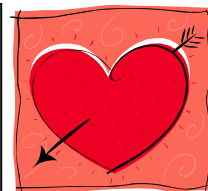


February News



EHT Math Newsletter

Kindergarten

Math Overview

Students will solve addition and subtraction word problems as well as add and subtract within ten using objects, drawings, models and verbal explanations. Students will also decompose numbers less than or equal to ten into pairs using a drawing or equation.

Skills Focus

- Add and subtract within 10 using various methods (objects, drawings, fingers, etc.)
- Breakdown numbers less than or equal to 10 into pairs.
- Find what number adds to a given number to make 10.
- Topic 7 - EnVision Math
- Topic 8 - EnVision Math

At Home Connection

Helpful Tools for Working with Your Child:

- [Discovery Education Math](#)
- [Everyday Mathematics](#)
- [PBS Parents](#)
- [Homework Spot](#)
- [Flash Card Math](#)
- [Pearson - EnVision Math Homepage](#)
- [PARCC Parent Resources](#)
- [Math Standards - NJSL](#)